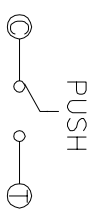


TER	ANG: (20°)	(15°)	(15°)	(20°)
①				
②				
③				

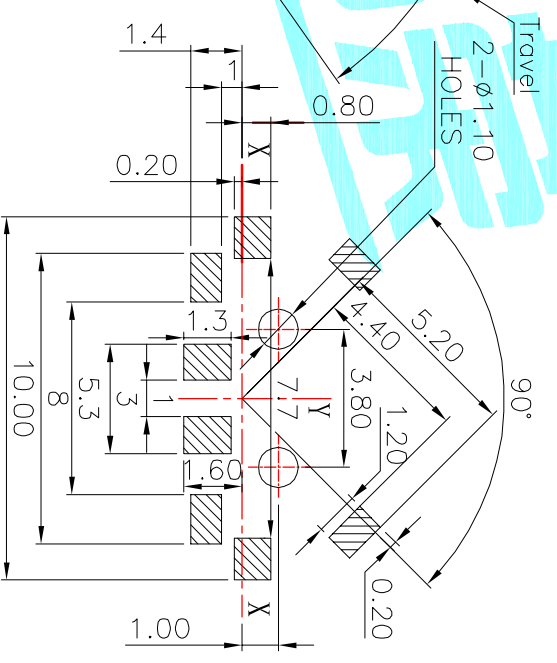
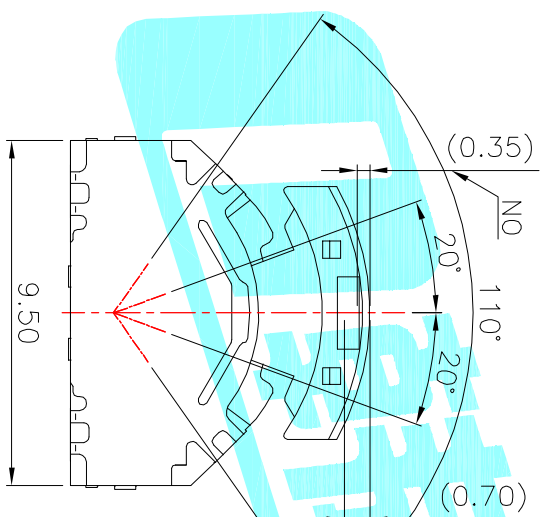
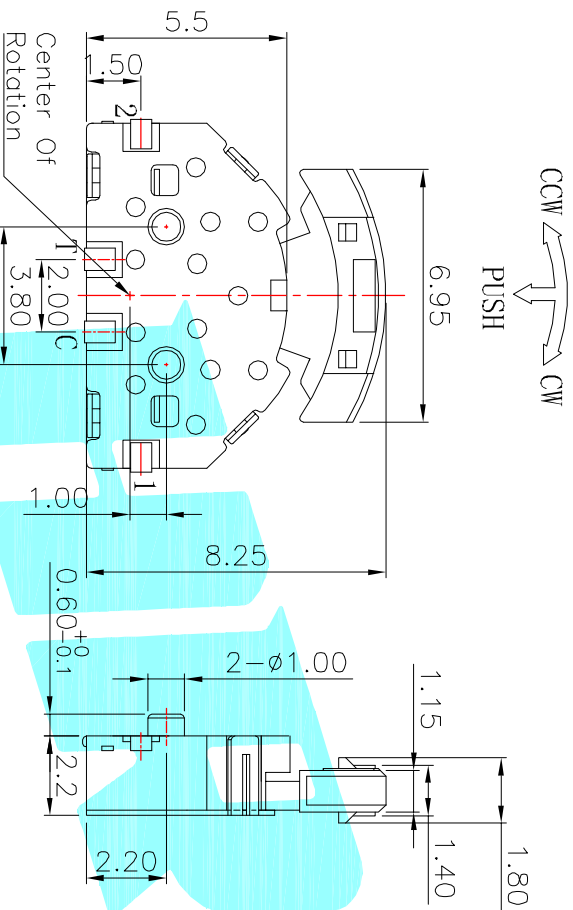
0° (ZZZZ=NO)

CCW ← → CW

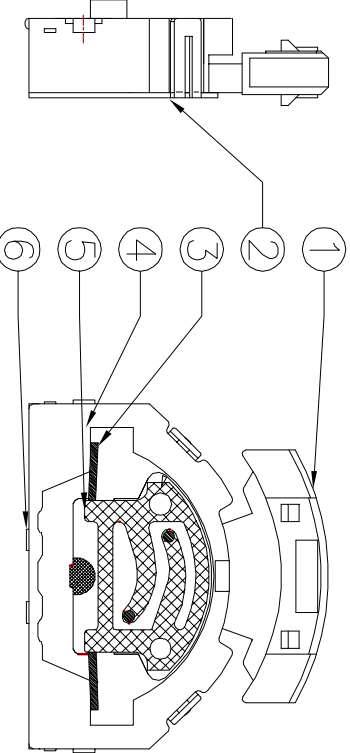
CODE TABLE



NOTE:  
 Operating Force:  
 lever portion 100 ± 30 gf  
 Push portion 205 ± 50 gf



P.C.B Mounting  
 Pattern Dimension



ITEM	PART NAME	TER'NO.	QTY.	MATERIAL	FINISHING	REMARK
①	Keystroke	---	1	Nylon	White	
②	Cover	---	1	SUS	---	
③	Spring	---	1	SUS	---	
④	Base	---	1	Nylon	Black	
⑤	Terminal	---	4	Brass(0.15t)	Plating silver	
⑥	Contact	---	1	F.Ag/Brass	---	

APPROVALS		DATE	TITLE:	
DRAWN	J.X.Zhang	2013/8/15	MULTIFUNCTIONAL SWITCHS	
CHECKED			PART NO. K1-1519SA-02	
APPROVALS			SCALE: 1:1	
TOLERANCES ARE		30~12.5 ± ±0.30	ANGLE	PROJ: ①
	10~30 ± ±0.20	5~10 ± ±0.15	±2'	SHEET 1 OF 1
	~5 ± ±0.10			

ECN NO.	REV.	DATE.	DESCRIPTION.	CHANGE.	CHECK.	APPRO.
	A		NEW			