

CIRCUIT DIAGRAM

NOTE:
 Rating: DC 30V 0.1A
 Operating Force: 60±15gf
 Lifetime: 100,000 Cycles

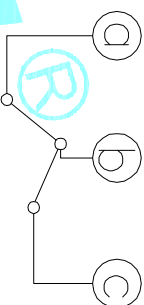
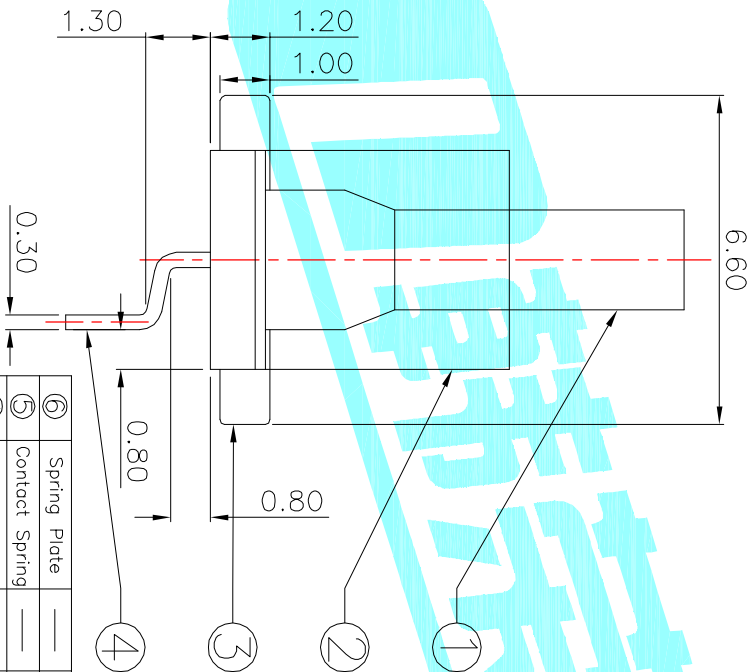
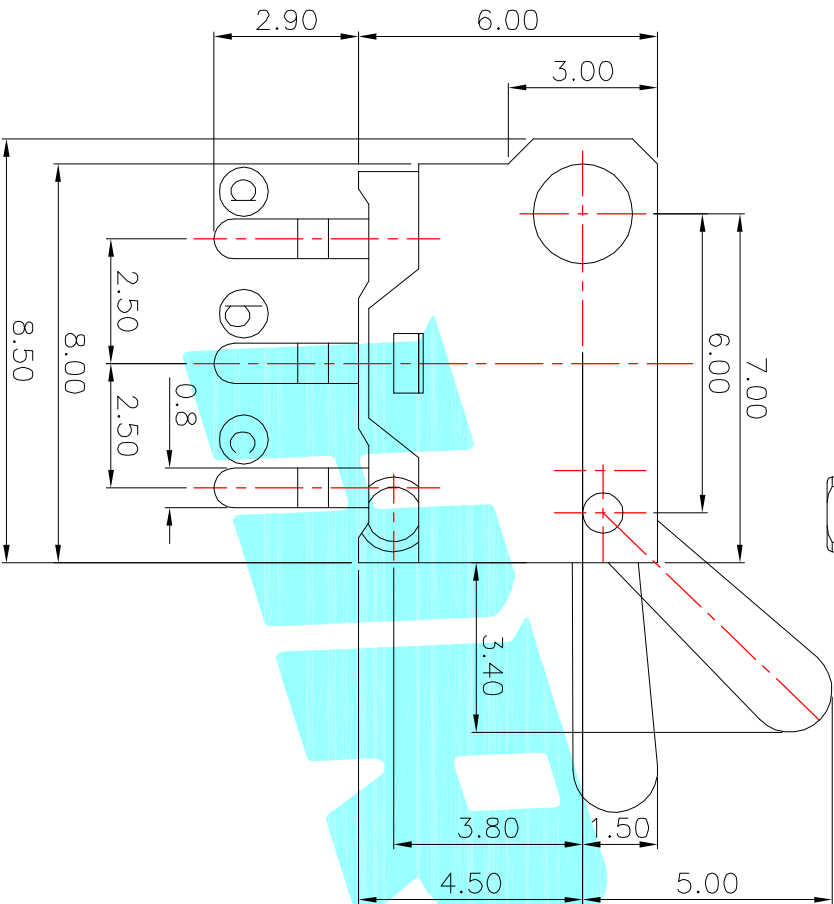
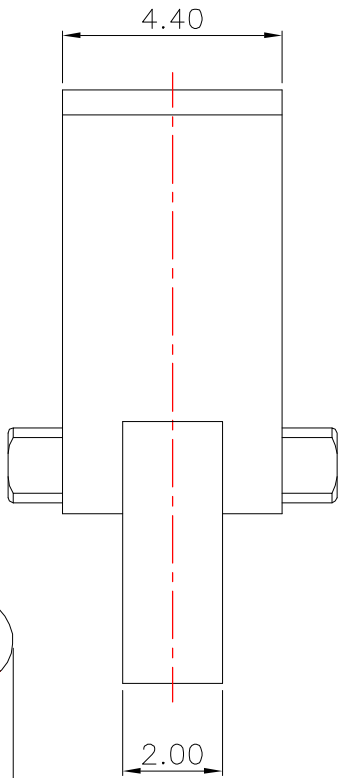
ITEM	PART NAME	TER'NO.	QTY.	MATERIAL	FINISHING	REMARK
①	Knob	---	1	NYLON	White	---
②	Cover	---	1	NYLON	Black	---
③	Base	---	4	Phosphor Bronze	Ag Plated	---
④	Terminal	---	1	Phosphor Bronze	Ag Plated	---
⑤	Contact Spring	---	1	Phosphor Bronze	Ag Plated	---
⑥	Spring Plate	---	1	Phosphor Bronze	Ag Plated	---

APPROVALS		DATE
DRAWN	J.X.Zhang	2013/9/18

TITLE: DETECTOR SWITCHS
 ELECTRONICS CO.,LTD

APPROVALS		PART NO.	SCALE:	PROJ:
CHECKED		K5-1285DA-02	1:1	①
APPROVALS				
TOLERANCES ARE		UNIT: mm	DRAWING NO.	SHEET 1 OF 1
30~12.5	±0.30			
10~30	±0.20			
5~10	±0.15			
~5	±0.10			

ECN NO.	REV.	DATE.	DESCRIPTION.	CHANGE.	CHECK.	APPRO.
	A		NEW			



CIRCUIT DIAGRAM

NOTE:
 Rating: DC 30V 0.1A
 Operating Force: 60±15gf
 Lifetime: 100,000 Cycles

ITEM	PART NAME	TER'NO.	QTY.	MATERIAL	FINISHING	REMARK
⑥	Spring Plate	—	1	Phosphor Bronze	Ag Plated	—
⑤	Contact Spring	—	1	Phosphor Bronze	Ag Plated	—
④	Terminal	—	4	Phosphor Bronze	Ag Plated	—
③	Base	—	1	NYLON	Black	—
②	Cover	—	1	NYLON	Black	—
①	Knob	—	1	NYLON	White	—

APPROVALS		DATE
DRAWN	J.X.Zhang	2013/9/18

ECN NO.	REV.	DATE.	DESCRIPTION.	CHANGE.	CHECK.	APPRO.
	A		NEW			

APPROVALS		TOLERANCES ARE	ANGLE	PART NO.	SCALE:	PROJ:
30°±0.1°	±0.30	10~30	±2°	K5-1285DA-01	1:1	①
5~10	±0.20	5~10				
~5	±0.15	~5				

APPROVALS		DATE	TITLE:	DRAWING NO.	SHEET
ELECTRONICS CO.,LTD			DETECTOR SWITCHS		1 OF 1